

# AGM GLOBAL VISION



- NIGHT VISION
- THERMAL IMAGING
- MULTISPECTRAL LASERS
- INFRARED ILLUMINATION
- DAY OPTICS

PRODUCT CATALOG

# TABLE OF CONTENTS

|   |    |
|---|----|
| ABOUT AGM GLOBAL VISION.....                  | 3  |
| <b>THERMAL MONOCULARS</b>                     |    |
| ASP-MICRO .....                               | 5  |
| TAIPAN .....                                  | 6  |
| ASP TM25-384, ASP TM35-384, ASP TM35-640..... | 7  |
| PROTECTOR.....                                | 8  |
| ASP .....                                     | 9  |
| <b>THERMAL BINOCULARS</b>                     |    |
| EXPLORATOR.....                               | 10 |
| COBRA .....                                   | 11 |
| EXPLORATOR FSB50 .....                        | 12 |
| <b>THERMAL RIFLE SCOPES</b>                   |    |
| RATTLER TS .....                              | 13 |
| PYTHON-MICRO .....                            | 14 |
| SECUTOR .....                                 | 15 |
| PYTHON .....                                  | 16 |
| <b>THERMAL CLIP-ONS</b>                       |    |
| RATTLER TC .....                              | 17 |
| ANACONDA-MICRO .....                          | 18 |
| VICTRIX .....                                 | 19 |
| ANACONDA.....                                 | 20 |
| <b>SPECIFICATIONS - THERMAL IMAGING</b> ..... | 21 |
| <b>NIGHT VISION MONOCULARS</b>                |    |
| WOLF-14 .....                                 | 26 |
| NVM-40, NVM-50 .....                          | 27 |
| PVS-14, PVS14-51 .....                        | 28 |
| PVS-OMEGA .....                               | 29 |

## EXPORT INFORMATION

Equipment described herein may require US Government authorization for export purposes. Diversion contrary to US law is prohibited.

|  |    |
|--|----|
| <b>NIGHT VISION GOGGLES</b>                |    |
| WOLF-7 .....                               | 30 |
| PVS-7.....                                 | 31 |
| NVG-40, NVG-50 .....                       | 32 |
| APACHE A-9 .....                           | 33 |
| <b>NIGHT VISION BINOCULARS</b>             |    |
| FOXBAT .....                               | 34 |
| FOXBAT-LE .....                            | 35 |
| <b>NIGHT VISION RIFLE SCOPES</b>           |    |
| WOLVERINE-4 .....                          | 36 |
| WOLVERINE PRO .....                        | 37 |
| <b>NIGHT VISION CLIP-ONS</b>               |    |
| COMANCHE-22 .....                          | 38 |
| COMANCHE-40 .....                          | 39 |
| <b>SPECIFICATIONS - NIGHT VISION</b> ..... | 40 |
| <b>IMAGE INTENSIFIER TUBES</b>             |    |
| GEN 2+ IIT, GEN 3 IIT .....                | 42 |
| <b>DAY OPTICS</b>                          |    |
| 7X50, 8X36 .....                           | 44 |
| 20RD .....                                 | 45 |
| 330PS, 430PS .....                         | 46 |
| 1-8X24RS, 2-16X44RS .....                  | 47 |
| <b>MULTISPECTRAL LASER</b>                 |    |
| RMSAL, TMAIM .....                         | 49 |
| SIOUX INFRARED ILLUMINATOR .....           | 50 |

Images are for illustration purposes only. Specifications are subject to change without notice, check our website [www.agmglobalvision.com](http://www.agmglobalvision.com)



# ABOUT AGM GLOBAL VISION

---

Based in Springerville, Arizona, USA, AGM Global Vision designs, develops, and distributes a wide range of professional-grade night vision and thermal rifle scopes, clip-on systems, spotting scopes, binoculars, monoculars, goggles, multispectral lasers, infrared illumination devices, and more.

The founders of AGM Global Vision (Allen Harding, Gary Tarakanov, and Mark Tarakanov) have a strong, well-established track record of creating multi-million-dollar companies within the electro-optics industry along with a formidable history of creating and developing highly recognized brands within the optics market segment. After spending time collaborating as a systems OEM to a number of key players in the field, the founders of AGM Global Vision decided that it was time to debut a new company that willfully aligns itself with a greater worldwide vision and marketing strategy that is bigger and bolder than most.

AGM Global Vision is on the way to become a unique standout within the industry by developing cutting edge products that exceed client expectations. As part of its diversified strategic plan, AGM Global Vision continues to support and develop its thriving OEM branding and product assembly services for its valued partners and customers.

AGM Global Vision is a rising leader in the night vision and thermal technology industry, and is recognized and respected by professionals and enthusiasts alike. AGM Global Vision is constantly adapting designs to the fluctuating needs and emerging technologies of the night vision and thermal imaging industries and often showcases the wide range of products at conferences and trade shows domestically and internationally.

With a global reach in mind, AGM Global Vision dominates a significant portion of market-share in the international electro-optical space through its subsidiary sales and assembly facility in Europe.

AGM Global Vision offers an extensive range of rifle scopes, clip-on systems, spotting scopes, binoculars, monoculars, goggles, lasers, infrared illumination devices, and other electro-optical systems for the most demanding weapons aficionados, big game hunters, law enforcement officers, and military professionals.

Our products are designed with cutting-edge technology and rugged materials to meet the needs and exceed the expectations of our users, and are always quality crafted with precision and integrity. AGM Global Vision is committed to excellence and wants to be the only company you think of when you think optics.

A black and white photograph of a soldier in tactical gear, including a helmet and goggles, aiming a rifle. The rifle is equipped with a thermal imaging scope. The soldier's face is partially visible in the background, looking through the scope. The foreground shows the rifle's rail and the soldier's gloved hand holding the weapon. A red banner is at the top right, and a list of thermal imaging products is on the right side. A red banner is also at the bottom right.

## THERMAL IMAGING

- MONOCULARS
- BINOCULARS
- RIFLE SCOPES
- CLIP-ON SYSTEMS





# ASP-MICRO THERMAL IMAGING MONOCULAR

The Asp-Micro handheld observational thermal monocular is equipped with a 160x120 infrared detector and a 720x540 LCOS display. It supports functions of observation, highest temperature target tracking, distance measurement, Wi-Fi hotspot, and so on. The high-sensitivity built-in thermal detector provides you with clear view even in total darkness. The monocular is mainly applied to scenarios such as patrolling, law enforcement, searching and rescuing, drug enforcement, anti-smuggling, suspect apprehension, hiking, travel, and hunting, etc.

- 160x120 resolution infrared detector
- Adaptive AGC, DDE, 3D DNR
- Built-in memory supports video recording/snapshot capturing
- Wi-Fi hotspot
- Distance measurement
- Highest temperature tracking
- 720x540 resolution LCOS display
- Built-in rechargeable Lithium battery
- More than 7 hours continuous running (with Wi-Fi hotspot function off)
- USB-C interface
- Limited 3-year warranty





# TAIPAN THERMAL IMAGING MONOCULAR

The AGM Taipan handheld thermal monocular is equipped with a 384×288 12 um infrared detector and a 1280×960 LCOS display. It supports functions of observation, highest temperature target tracking, distance measurement, Wi-Fi hotspot, and so on.

The high-sensitivity built-in thermal detector provides you with clear view even in total darkness. The monocular is mainly applied to scenarios such as patrolling, law enforcement, searching and rescuing, drug enforcement, anti-smuggling, suspect apprehension, hiking, travel, and hunting, etc.

- 12 um, 384×288 resolution, high sensitivity detector
- Adaptive AGC, DDE, 3D DNR
- 128×960 resolution LCOS display
- Distance measurement function
- The device detects and marks the hot spot of highest temperature
- A wide variety of color palettes
- Built-in memory supports video recording/snapshot capturing
- 1x, 2x, 4x and 8x digital zoom
- Picture in Picture mode
- Wi-Fi Hotspot
- Device can capture snapshots, record videos, and set parameters via APP after being connected to your phone
- Built-in rechargeable Li-Ion battery
- More than 7.5 hours continuous running (with Wi-Fi hotspot function off)
- USB-C interface
- Limited 3-year warranty





# ASP TM25-384 ASP TM35-384 ASP TM35-640

## THERMAL IMAGING MONOCULAR

The Asp is a handheld thermal imaging monocular designed for both day and night observation irrespective of the environment and weather factors.

The Asp can be useful during the missions where user requires an accurate tool for stadia distance measuring, hot spot tracking, or additional Wi-Fi hotspot. The high-sensitivity built-in thermal detector provides the operator with clear viewing in conditions close to total darkness. The monocular is perfect for applications such as law enforcement, search and rescue, border or home security, hiking, travel, hunting, wildlife observation and many others.

- 384×288 or 640×512 resolution, high sensitivity detector\*
- Adaptive AGC, DDE, 3D DNR
- 1024×768 resolution OLED display
- Distance measurement function
- The device detects and marks the hot spot of highest temperature
- A wide variety of color palettes
- Built-in memory supports video recording/snapshot capturing
- 1x, 2x and 4x digital zoom
- Picture in Picture mode with 2x digital zoom
- Wi-Fi Hotspot
- Device can capture snapshots, record videos, and set parameters via APP after being connected to your phone with Wi-Fi hotspot
- Built-in rechargeable Li-Ion battery
- Up to five hours continuous running (with Wi-Fi hotspot function off)
- Limited 3-year warranty



\* Asp TM25-384 and Asp TM35-384 are available only by special order



# PROTECTOR THERMAL IMAGING MONOCULAR

The AGM Protector represents the most technologically advanced thermal imaging monocular product line currently existing on the market.

The aircraft aluminum and magnesium alloy along with the high-quality optics make the unit lightweight, but at the same time tough and durable.

This uncooled, long-wave infrared, magnified thermal imaging camera by AGM Global Vision is designed for fulfilling both, day and night missions, irrespective of the environment and weather factors.

A variety of objective lenses (25 mm, 50 mm, 75 mm) enable the operator to use the device as both a compact, pocket-sized thermal imaging monocular, or as a long-range observation tool.

The Protector thermal imaging monocular can be easily connected to an extended battery pack (5V), increasing operational time. Optional Wi-Fi module for live video streaming and recording is also available.

- Lightweight and compact design
- Superior clarity, versatility and reliability
- Easy to operate control panel
- High resolution display
- 2x and 4x digital zoom
- Picture in Picture mode with 2x digital zoom
- Automatic or manual (silent) calibration
- Stadiametric rangefinder
- Powered by two standard CR123A batteries
- External power supply via micro-USB
- Optional external Wi-Fi module and video recorder
- Integral MIL-STD-1913 rail on unit for optional accessories
- Tripod mountable
- Limited 3-Year Warranty







## ASP THERMAL IMAGING MONOCULAR

The AGM Asp represents the line of the most technologically advanced thermal imaging monoculars currently existing on the market. Based on FLIR Tau 2 VOx microbolometer cores and made of high-grade aircraft aluminum alloy the unit guarantees durability and outstanding performance even to the most sophisticated users.

This uncooled, long-wave infrared, magnified thermal imaging camera by AGM is designed for fulfilling both day and night missions irrespective of the environment and weather factors, while a wide variety of objective lenses (25 mm, 50 mm, and 75 mm) enables the operator to use the device as both a compact, pocket-sized thermal imaging monocular, or as a long-range observation tool.

The Asp thermal imaging monocular can be easily connected to extended battery pack to increase operational time. Optional Wi-Fi module for live video streaming and recording is also available.

- FLIR Tau 2 17 $\mu$ m pitch thermal sensor (336x256 or 640x512 resolution)\*
- Durable and lightweight design
- Easy and intuitive operation
- Manually adjustable eyepiece and objective lens
- A wide variety of color palettes
- Digital Zoom: 1x, 2x, 4x, and 8x
- Waterproof
- Integral MIL-STD-1913 rails on unit for optional accessories
- Optional video recording
- External Wi-Fi module (optional)
- Powered by two standard CR123A batteries
- External power supply via micro USB
- Limited 3-year warranty



\* The models with 336x226 resolution are available only by special order



# EXPLORATOR THERMAL IMAGING BINOCULARS

The AGM Explorator is the latest and most technologically-advanced thermal imaging device for observation currently offered by AGM. This bi-ocular is made of high-grade aluminum and magnesium alloy, making the unit both durable and lightweight. Due to its waterproof capability the device performs well even in severe weather conditions and challenging environments. The Explorator is available in two models – with 50 mm and 75 mm Germanium objective lenses - which allow selecting the most suitable version for the task at hand. The unit can be easily mounted on a tripod which grants the operator convenient/hands free use of thermal binocular.

The Explorator's user-friendly interface, comfortable and ergonomic buttons makes use and application incredibly simple. The thermal imaging unit offers ten different image palettes: white hot/black hot, etc. that can be easily adapted depending on different environmental conditions.

This high-tech bi-ocular can take either two CR123A 3V Lithium Batteries or two CR123 rechargeable batteries, with voltage ranging from 3.0 V to 3.7V. In addition, the external battery pack (5V) connected via micro-USB port provides additional operating time.

- Lightweight and compact design
- Dual eye viewing system for comfortable, extended viewing sessions
- Superior clarity, versatility and reliability
- Easy to operate control panel
- High resolution display
- 2x and 4x digital zoom
- Picture in Picture mode with 2x digital zoom
- Automatic or manual (silent) calibration
- Stadiametric rangefinder
- Powered by two standard CR123A batteries
- External power supply via micro-USB
- Optional external Wi-Fi module and video recorder
- Integral MIL-STD-1913 rail on unit for optional accessories
- Tripod mountable
- Limited 3-Year Warranty





# COBRA THERMAL IMAGING BINOCULARS

The AGM Cobra is the latest and most technologically-advanced thermal imaging device for observation currently available on the market. This bi-ocular system is made of high-grade aircraft aluminum alloy, making the unit both durable and lightweight. Due to its waterproof capability the Cobra performs well even in severe weather conditions and challenging environments.

The Cobra's user-friendly interface, comfortable and ergonomic buttons, together with the wireless remote control makes its use and application incredibly simple. Based on the FLIR Tau 2 VOx microbolometer core, the Cobra offers a variety of image palettes: white hot/black hot/Rainbow, etc. that can be easily adapted depending on different environmental conditions.

This high-tech bi-ocular can take either two CR123A 3V Lithium Batteries or two CR123 rechargeable batteries, with voltage ranging from 3.0V to 3.7V. In addition, the external battery bank connected via standard micro-USB port provides an additional operating time.

- FLIR Tau 2 17μm pitch thermal sensor (336x256 or 640x512 resolution)\*
- Dual eye viewing system for comfortable, extended viewing sessions
- Lightweight and robust design
- Easy to operate device
- Manually adjustable eyepiece and objective lens
- Real-time display
- Multiple color palettes
- 2x, 4x, and 8x digital zoom
- Waterproof
- External Wi-Fi module (optional)
- Integral MIL-STD-1913 rail on unit for optional accessories
- Powered by two standard CR123A batteries
- External power supply
- Optional video recording
- Tripod mountable
- Limited 3-year warranty



\* The models with 336x226 resolution are available only by special order





# EXPLORATOR FSB50 BI-SPECTRUM BINOCULARS

AGM Explorator FSB50-640 handheld thermal & optical bi-spectrum binocular is equipped with ultra-low light optical detector, 640x512 thermal detector, 1024x768 OLED display and eyepiece with large field of view. The device can quickly discover and locate hiding objects even under extreme environment, such as smoke, fog, rain and snow. It can be widely applied to scenarios like patrol, law enforcement, search and rescue, drug enforcement, anti-smuggling and suspect capture.

Due to its waterproof capability the device performs well even in severe weather conditions and challenging environment. The Explorator's user-friendly interface, comfortable and ergonomic buttons makes adoption and application incredibly simple. The thermal imaging unit offers many different variants of image palettes: white hot/black hot, etc. that can be easily adapted depending on different environmental conditions.

The unit can be easily mounted on a tripod which grants operator convenient/hands free use of thermal binocular.

This high-tech binocular can take four 18650 rechargeable Lithium batteries for more than 7 hours operating time. In addition, the external power (5V) provides an additional operating time.



- Thermal module: 640x512@25fps. Optical module: 1280x960@25fps
- DDE (Digital Detail Enhancement)
- 3D DNR, adaptive AGC (Automatic Gain Control)
- Ultra-low illumination (optical channel)
- High resolution 1024x768 OLED display
- Automatic OLED backlight
- Manual focus for thermal lens
- Bi-spectrum image fusion and object highlight for detail enhancement and target recognition
- Video recording, replay, picture snapshot and search (capable to review the event on device)
- Wi-Fi hotspot, GPS, cursor display
- Up to 7 hours continuous running
- IP67
- Limited 3-Year Warranty



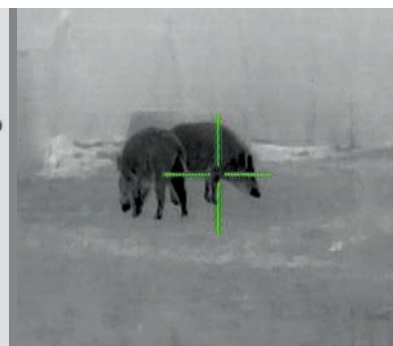


# RATTLER TS THERMAL IMAGING RIFLE SCOPE

The AGM Rattler TS25 and Rattler TS35 are the compact thermal imaging scopes developed for 24 hours operation under any weather and environmental conditions. Two objective lens options allow the customer to choose perfect unit for your needs where 25 mm lens designed for short range shooting, while the 35 mm lens model will be great for medium range missions.

Thermal image riflescope has 384x288 thermal detector and 1024x768 OLED monitor, which provides clear image under harsh environment conditions like darkness, fog, smoke, dust, rain, snow, wood, camouflage, etc. Powered with two CR123 batteries the AGM Rattler gives up to 4.5 hours of continuous operation time. An external 5V power bank (battery pack) can be easily connected via a USB-C connector for a significant increase of operating time. Onboard Wi-Fi module for live video streaming and video/images recording via application are also available.

- Lightweight and compact design
- Easy to operate device
- Electronic accuracy correction
- Automatic or manual (silent) calibration
- High resolution 1024x768 OLED display
- Waterproof, shockproof
- 1x, 2x, 4x and 8x digital zoom
- Picture in Picture mode
- Stadiametric rangefinder
- Video recording and snapshot capturing
- Built-in 16 GB EMMC memory module
- Wi-Fi data transmission
- Powered by two standard CR123A batteries
- Up to 4.5 hours continuous working
- External power supply capability
- Video output for external monitor or recorder
- Limited 3-year warranty





# PYTHON-MICRO THERMAL IMAGING RIFLE SCOPE

The AGM Python-Micro TS35 and Python-Micro TS50 are the compact thermal imaging scopes developed for 24 hours operation under any weather and environmental conditions. Two objective lens options allow the customer to choose perfect unit for your needs where 35 mm lens designed for short range shooting, while the 50 mm lens will be great for medium range missions.

Powered with two CR123 batteries the AGM Python-Micro gives up to 5 hours of continuous operation time. An external 5V power bank (battery pack) can be easily connected via a USB connector for a significant increase of operating time. Onboard Wi-Fi module for live video streaming and video/images recording via application are also available.

- Lightweight and compact design
- Easy to operate device
- Electronic accuracy correction
- Automatic or manual (silent) calibration
- High resolution OLED display
- Waterproof, shockproof
- 2x and 4x digital zoom
- Picture in Picture mode with 2x digital zoom
- Stadiametric rangefinder
- Powered by two standard CR123A batteries
- Wi-Fi data transmission
- Video/images recording via APP
- External power supply capability
- Video output for external monitor or recorder
- Limited 3-year warranty



\* Available only by special order





# SECUTOR THERMAL IMAGING RIFLE SCOPE

The AGM Secutor is a compact thermal imaging scope developed for 24 hours operation under any weather and environmental conditions. The rifle scope is made of high-grade construction materials that are lightweight, weatherproof and tough. Three objective lens options allow choosing perfect unit for your needs where 25 mm lens is designed for short range shooting, 50 mm lens model will be great for medium range missions, while 75 mm lens will become a perfect solution for long range aiming.

Powered with two CR123 batteries, the Secutor provides up to 5 hours of continuous work and optional external (5V) battery pack with high-capacity is capable of increasing the total operation time to up to 44 hours.

Optionally the capabilities of the device can be extended with Wi-Fi module, external video recorder, or monitor.

- Lightweight and compact design
- Superior clarity, versatility and reliability
- Waterproof & shockproof
- Easy to operate control panel
- High resolution display
- Various reticle types and colors
- 5 Zeroing profiles
- 2x and 4x digital zoom
- Picture in Picture mode with 2x digital zoom
- Automatic or manual (silent) calibration
- Stadiametric rangefinder
- Powered by two standard CR123A batteries
- External power supply via micro-USB
- Optional external Wi-Fi module and video recorder
- Integral Picatinny rails on unit for optional accessories
- Limited 3-Year Warranty





# PYTHON THERMAL IMAGING RIFLE SCOPE

The AGM Python is a long-wave infrared, uncooled, thermal imaging rifle scope designed for 24 hours operation, eliminating the need to dismount the unit from the rifle.

The housing is made of high-grade aircraft aluminum alloy, making it lightweight, but at the same time tough to tolerate high recoil. The waterproof design of AGM Python grants excellent performance even under severe environmental and weather conditions. The device has a variety of options providing users with opportunity to choose between a set of different Germanium objective lenses (25mm, 50mm, or 75mm) and FLIR Tau 2 detector types (336x256 or 640x512), which allow the operator to achieve the most suitable performance for the tasks he faces.

The Python's user-friendly interface, comfortable and ergonomic buttons, together with the wireless remote control, makes adoption and application incredibly simple. The Python includes a variety of color palettes and reticle patterns, adjustable image brightness and contrast, an internal menu, and digital zoom.

The capabilities of the device can be enhanced through the use of with Wi-Fi module, external video recorder or monitor. For long-term missions, an external battery pack can be connected via micro-USB port to drastically increase operation time.

- FLIR Tau 2 17µm pitch thermal sensor (336x256 or 640x512 resolution)\*
- Lightweight and robust design
- Manually adjustable eyepiece and objective lens
- Digital zoom: 1x, 2x, 4x, and 8x
- Multiple color palettes
- Multiple reticle patterns
- Wireless remote control
- Waterproof
- Optional video recording
- External Wi-Fi module (optional)
- Powered by two standard CR123A batteries
- External power supply capability
- Limited 3-year warranty

\* The models with 336x226 resolution are available only by special order





## RATTLER TC THERMAL IMAGING CLIP-ON

The AGM Rattler TC35-384 is a compact thermal imaging clip-on system that allows quick transformation of the day optics into thermal imaging device without any special tools or equipment.

Rattler TC has 384x288 thermal detector and 1024x768 OLED monitor, which provides clear image under harsh environment conditions like darkness, fog, smoke, dust, rain, snow, wood, camouflage, etc. The product is mainly applied to scenarios such as patrolling, hunting, etc.

The Rattler TC can easily be attached in front of rifle scopes with magnification up to 8x for medium range use.

Onboard Wi-Fi module for live video streaming and video/images recording via application are also available.

- Quick conversion of daytime optics into thermal imaging scope
- Mounts in front of any daytime scope, no re-zeroing is required
- Lightweight and compact design
- Easy to operate control panel
- Automatic or manual (silent) calibration
- 1x, 2x, 4x and 8x digital zoom
- Picture in Picture mode
- Supports distance measurement
- High resolution OLED display
- Wi-Fi data transmission
- Video recording and snapshot capturing
- Built-in 16 GB EMMC memory module
- Waterproof, shockproof
- Powered by two standard CR123A batteries
- Up to 4.5 hours continuous working
- External power supply capability via USB-C interface
- Limited 3-year warranty







# ANACONDA-MICRO THERMAL IMAGING CLIP-ON

The AGM Anaconda-Micro TC50 is a compact thermal imaging clip-on system that allows quick transformation of the day optics into thermal imaging device without any special tools or equipment. The Anaconda-Micro can easily be attached in front of rifle scopes with magnification up to 8x for medium range use.

Powered with two CR123 batteries the Anaconda-Micro gives up to 5 hours of continuous operation. An optional high capacity external battery pack is capable of increasing the total operation time to up to 44 hours. Onboard Wi-Fi module for live video streaming and video/images recording via application are also available.

- Quick conversion of daytime optics into thermal imaging scope
- Mounts in front of any daytime scope, no re-zeroing is required
- Electronic accuracy correction
- Lightweight and compact design
- Easy to operate control panel
- Automatic or manual (silent) calibration
- High resolution OLED display
- Wi-Fi data transmission
- Video/images recording via APP
- Waterproof, shockproof
- Powered by two standard CR123A batteries
- Video output for external monitor or recorder
- External power supply capability
- Limited 3-year warranty



\* Available only by special order





## VICTRIX THERMAL IMAGING CLIP-ON

The AGM Victrix is a compact thermal imaging clip-on system that allows quick transformation of the day optics into a thermal imaging device without any special tools or accessories. The Victrix can be easily attached to scopes with magnification up to 8x for medium range use. 50 mm objective lens of the thermal clip-on will be great for medium range missions.

Powered with two CR123 batteries the unit provides up to 5 hours of continuous operation. An optional high-capacity external battery pack is capable of increasing the total operation time to up to 44 hours.

The Victrix can be also connected to an optional video recorder for shooting real time video or external Wi-Fi module in order to connect with smartphones.

- Quick conversion of daytime optics into thermal imaging scope
- Mounts in front of any daytime scope, no re-zeroing is required
- Electronic accuracy correction
- Lightweight and compact design
- Superior clarity, versatility and reliability
- Waterproof & shockproof
- Easy to operate control panel
- High resolution display
- Picture in Picture (PIP) mode with 2x digital zoom
- Automatic or manual (silent) calibration
- Stadiametric rangefinder
- Powered by two standard CR123A batteries
- External power supply via micro-USB
- Optional external Wi-Fi module and video recorder
- Integral rails on unit for optional accessories
- Limited 3-Year Warranty





# ANACONDA THERMAL IMAGING CLIP-ON

The AGM Anaconda is a compact thermal imaging clip-on system that allows quick transformation of the day optics into a thermal imaging device without any special tools or accessories. The Anaconda can be easily attached on up to 8x magnification scopes for medium range use.

Powered by two CR123 batteries the unit provides up to 5 hours of continuous operation. An optional high-capacity external battery pack (5V) is capable of increasing the total operation time to up to 44 hours.

The Anaconda can also be connected to an optional video recorder for shooting real time video or an external Wi-Fi module to connect with smartphones.

- Quick conversion of daytime optics into thermal imaging scope
- Mounts in front of any daytime scope, no re-zeroing is required
- FLIR Tau 2 17 $\mu$ m pitch thermal sensor (336x256 or 640x512 resolution)\*
- Lightweight and robust design
- Easy to operate device
- Manually adjustable objective lens
- Real-time display
- Multiple color palettes
- Wireless remote control
- Waterproof
- External Wi-Fi module (optional)
- Optional video recording
- Integral MIL-STD-1913 rails for optional accessories
- Powered by two standard CR123A batteries
- External power supply via micro USB
- Limited 3-year warranty



\* The model with 336x226 resolution is available only by special order



# SPECIFICATIONS THERMAL IMAGING

## THERMAL IMAGING MONOCULARS

|                       | Asp-Micro TM160                          | Taipan TM15-384                          | Taipan TM19-384                          | Taipan TM25-384                          |
|-----------------------|--|--|--|--|
| Detector              | 17µm Uncooled Microbolometer             | 12µm Uncooled Microbolometer             | 12µm Uncooled Microbolometer             | 12µm Uncooled Microbolometer             |
| Resolution            | 160x120                                  | 384x288                                  | 384x288                                  | 384x288                                  |
| Video Refresh Rate    | 50 Hz                                    | 50 Hz                                    | 50 Hz                                    | 50 Hz                                    |
| Lens System           | 6.2 mm; F/1.1                            | 15 mm; F/1.0                             | 19 mm; F/1.0                             | 25 mm; F/1.0                             |
| Optical Magnification | 1x                                       | 1.5x                                     | 1.9x                                     | 2.5x                                     |
| Field of View (H × V) | 15.61° × 11.74°                          | 17.5° × 13.1°                            | 13.8° × 10.4°                            | 10.5° × 7.9°                             |
| Digital Zoom          | 1x, 2x, 4x                               | 1x, 2x, 4x, 8x, PIP                      | 1x, 2x, 4x, 8x, PIP                      | 1x, 2x, 4x, 8x, PIP                      |
| Weight                | 0.27 kg (0.6 lb)                         | 0.29 kg (0.64 lb)                        | 0.31 kg (0.68 lb)                        | 0.30 kg (0.66 lb)                        |
| Dimensions            | 161 × 61 × 57 mm<br>(6.3 × 2.4 × 2.2 in) | 158 × 61 × 57 mm<br>(6.2 × 2.4 × 2.2 in) | 171 × 61 × 57 mm<br>(6.7 × 2.4 × 2.2 in) | 171 × 61 × 57 mm<br>(6.7 × 2.4 × 2.2 in) |

|                       | Asp TM25-384*                            | Asp TM35-384*                            | Asp TM35-640                             | Protector TM25-384*                      | Protector TM50-384*                      | Protector TM75-384*                      |
|-----------------------|--|--|--|--|--|--|
| Detector              | 17µm Uncooled Microbolometer             | 17µm Uncooled Microbolometer             | 17µm Uncooled Microbolometer             | 17µm Uncooled Microbolometer             | 17µm Uncooled Microbolometer             | 17µm Uncooled Microbolometer             |
| Resolution            | 384x288                                  | 384x288                                  | 640x512                                  | 384x288                                  | 384x288                                  | 384x288                                  |
| Video Refresh Rate    | 50 Hz                                    | 50 Hz                                    | 50 Hz                                    | 50 Hz                                    | 50 Hz                                    | 50 Hz                                    |
| Lens System           | 25 mm; F/1.0                             | 35 mm; F/1.0                             | 35 mm; F/1.0                             | 25 mm; F/1.0                             | 50 mm; F/1.0                             | 75 mm; F/1.0                             |
| Optical Magnification | 1.7x                                     | 2.4x                                     | 1.4x                                     | 1.25x                                    | 2.5x                                     | 3.75x                                    |
| Field of View (H × V) | 14.9° × 11.2°                            | 10.7° × 8.0°                             | 17.7° × 14.2°                            | 15.0° × 11.2°                            | 7.5° × 5.6°                              | 5.0° × 3.7°                              |
| Digital Zoom          | 1x, 2x, 4x, PIP(2x)                      | 1x, 2x, 4x, PIP(2x)                      | 1x, 2x, 4x, PIP(2x)                      | 1x, 2x, 4x, PIP(2x)                      | 1x, 2x, 4x, PIP(2x)                      | 1x, 2x, 4x, PIP(2x)                      |
| Weight                | 0.46 kg (1.01 lb)                        | 0.48 kg (1.05 lb)                        | 0.48 kg (1.05 lb)                        | 0.44 kg (0.83 lb)                        | 0.55 kg (1.2 lb)                         | 0.69 kg (1.5 lb)                         |
| Dimensions            | 189 × 74 × 66 mm<br>(7.4 × 2.9 × 2.6 in) | 202 × 74 × 66 mm<br>(7.9 × 2.9 × 2.6 in) | 202 × 74 × 66 mm<br>(7.9 × 2.9 × 2.6 in) | 195 × 70 × 58 mm<br>(7.7 × 2.8 × 2.3 in) | 225 × 70 × 64 mm<br>(8.9 × 2.3 × 2.5 in) | 250 × 93 × 93 mm<br>(9.8 × 3.7 × 3.7 in) |

\* Special Order

## THERMAL IMAGING MONOCULARS

|                              | Asp TM25-336*                                 | Asp TM50-336*                                 | Asp TM75-336*                                 | Asp TM25-640                                  | Asp TM50-640                                  | Asp TM75-640                                  |
|------------------------------|---|---|---|---|---|---|
| <b>Detector</b>              | FLIR Tau 2<br>17µm Uncooled<br>Microbolometer | FLIR Tau 2<br>17µm Uncooled<br>Microbolometer | FLIR Tau 2<br>17µm Uncooled<br>Microbolometer | FLIR Tau 2<br>17µm Uncooled<br>Microbolometer | FLIR Tau 2<br>17µm Uncooled<br>Microbolometer | FLIR Tau 2<br>17µm Uncooled<br>Microbolometer |
| <b>Resolution</b>            | 336x256                                       | 336x256                                       | 336x256                                       | 640x512                                       | 640x512                                       | 640x512                                       |
| <b>Video Refresh Rate</b>    | 60 Hz   | 60 Hz   | 60 Hz   | 30 Hz   | 30 Hz   | 30 Hz   |
| <b>Lens System</b>           | 25 mm; F/1.0                                  | 50 mm; F/1.0                                  | 75 mm; F/1.0                                  | 25 mm; F/1.0                                  | 50 mm; F/1.0                                  | 75 mm; F/1.0                                  |
| <b>Optical Magnification</b> | 1.7x  | 3x  | 5x  | 1x  | 2x  | 3x  |
| <b>Field of View (H x V)</b> | 13° x 10°                                     | 7.8° x 5.9°                                   | 4.3° x 3.3°                                   | 24° x 20°                                     | 14.8° x 11.8°                                 | 8.3° x 6.6°                                   |
| <b>Digital Zoom</b>          | 1x, 2x, 4x                                    | 1x, 2x, 4x                                    | 1x, 2x, 4x                                    | 1x, 2x, 4x, 8x                                | 1x, 2x, 4x, 8x                                | 1x, 2x, 4x, 8x                                |
| <b>Weight</b>                | 0.58 kg (1.2 lb)                              | 0.69 kg (1.5 lb)                              | 0.83 kg (1.8 lb)                              | 0.58 kg (1.2 lb)                              | 0.69 kg (1.5 lb)                              | 0.83 kg (1.8 lb)                              |
| <b>Dimensions</b>            | 196 x 72 x 56 mm<br>(7.7 x 2.8 x 2.2 in)      | 220 x 72 x 60 mm<br>(8.6 x 2.8 x 2.3 in)      | 248 x 89 x 89 mm<br>(9.7 x 3.5 x 3.5 in)      | 196 x 72 x 56 mm<br>(7.7 x 2.8 x 2.2 in)      | 220 x 72 x 60 mm<br>(8.6 x 2.8 x 2.3 in)      | 248 x 89 x 89 mm<br>(9.7 x 3.5 x 3.5 in)      |

## THERMAL IMAGING BINOCULARS

|                              | Explorator<br>TB50-384                    | Explorator<br>TB75-384                    | Cobra<br>TB50-336*                            | Cobra<br>TB75-336*                            | Cobra<br>TB50-640                             | Cobra<br>TB75-640                             | Explorator<br>FSB50-640                   |
|------------------------------|---|---|---|---|---|---|---|
| <b>Detector</b>              | 17µm Uncooled<br>Microbolometer           | 17µm Uncooled<br>Microbolometer           | FLIR Tau 2<br>17µm Uncooled<br>Microbolometer | FLIR Tau 2<br>17µm Uncooled<br>Microbolometer | FLIR Tau 2<br>17µm Uncooled<br>Microbolometer | FLIR Tau 2<br>17µm Uncooled<br>Microbolometer | 17µm Uncooled<br>Microbolometer           |
| <b>Resolution</b>            | 384x288                                   | 384x288                                   | 336x256                                       | 336x256                                       | 640x512                                       | 640x512                                       | 640x512                                   |
| <b>Video Refresh Rate</b>    | 50 Hz                                     | 50 Hz                                     | 60 Hz   | 60 Hz   | 30 Hz   | 30 Hz   | 25 Hz                                     |
| <b>Lens System</b>           | 50 mm; F/1.0                              | 75 mm; F/1.0                              | 50 mm; F/1.0                                  | 75 mm; F/1.0                                  | 50 mm; F/1.0                                  | 75 mm; F/1.0                                  | 50 mm; F/1.0                              |
| <b>Optical Magnification</b> | 2.5x                                      | 3.75x                                     | 2.9x  | 4.3x  | 1.7x  | 2.6x  | 1x  |
| <b>Field of View (H x V)</b> | 7.5° x 5.6°                               | 5.0° x 3.7°                               | 7.8° x 5.9°                                   | 4.3° x 3.3°                                   | 14.8° x 11.8°                                 | 8.3° x 6.6°                                   | 12.42° x 9.95°                            |
| <b>Digital Zoom</b>          | 1x, 2x, 4x, PIP(2x)                       | 1x, 2x, 4x, PIP(2x)                       | 1x, 2x, 4x                                    | 1x, 2x, 4x                                    | 1x, 2x, 4x, 8x                                | 1x, 2x, 4x, 8x                                | 1x, 2x, 4x                                |
| <b>Weight</b>                | 0.75 kg (1.65 lb)                         | 0.99 kg (2.18 lb)                         | 0.9 kg (1.98 lb)                              | 1.14 kg (2.51 lb)                             | 0.9 kg (1.98 lb)                              | 1.14 kg (2.51 lb)                             | 1.0 kg (2.2 lb)                           |
| <b>Dimensions</b>            | 225 x 112 x 60 mm<br>(8.7 x 4.4 x 2.4 in) | 249 x 112 x 89 mm<br>(9.8 x 4.4 x 3.5 in) | 288 x 109 x 60 mm<br>(11.3 x 4.2 x 2.3 in)    | 312 x 109 x 89 mm<br>(12.2 x 4.2 x 3.5 in)    | 288 x 109 x 60 mm<br>(11.3 x 4.2 x 2.3 in)    | 312 x 109 x 89 mm<br>(12.2 x 4.2 x 3.5 in)    | 164 x 182 x 73 mm<br>(6.5 x 7.2 x 3.9 in) |

\* Special Order

## THERMAL IMAGING RIFLE SCOPES

|                       | Rattler TS25-384                         | Rattler TS35-384                         | Python-Micro TS35*                       | Python-Micro TS50*                       | Python-Micro TS50LRF*                    |
|-----------------------|--|--|--|--|--|
| Detector              | 17µm Uncooled Microbolometer             | 17µm Uncooled Microbolometer             | 17µm Uncooled Microbolometer             | 17µm Uncooled Microbolometer             | 17µm Uncooled Microbolometer             |
| Resolution            | 384x288                                  | 384x288                                  | 384x288                                  | 384x288                                  | 384x288                                  |
| Video Refresh Rate    | 50 Hz                                    | 50 Hz                                    | 50 Hz                                    | 50 Hz                                    | 50 Hz                                    |
| Lens System           | 25 mm; F/1.1                             | 35 mm; F/1.0                             | 35 mm; F/1.1                             | 50 mm; F/1.1                             | 50 mm; F/1.1                             |
| Optical Magnification | 1.5x                                     | 2.14x                                    | 1.9x                                     | 2.7x                                     | 2.7x                                     |
| Field of View (H × V) | 14.9° × 11.2°                            | 10.0° × 8.0°                             | 10.6° × 8°                               | 7.4° × 5.6°                              | 7.4° × 5.6°                              |
| Digital Zoom          | 1x, 2x, 4x, 8x, PIP                      | 1x, 2x, 4x, 8x, PIP                      | 1x, 2x, 4x, PIP(2x)                      | 1x, 2x, 4x, PIP(2x)                      | 1x, 2x, 4x, PIP(2x)                      |
| Weight                | 0.41 kg (0.91 lb)                        | 0.41 kg (0.91 lb)                        | 0.38 kg (0.83 lb)                        | 0.41 kg (0.90 lb)                        | 0.41 kg (0.90 lb)                        |
| Dimensions            | 187 × 62 × 59 mm<br>(7.3 × 2.4 × 2.3 in) | 187 × 62 × 59 mm<br>(7.3 × 2.4 × 2.3 in) | 176 × 61 × 67 mm<br>(6.9 × 2.4 × 2.6 in) | 193 × 65 × 67 mm<br>(7.5 × 2.8 × 2.6 in) | 193 × 65 × 67 mm<br>(7.5 × 2.8 × 2.6 in) |

## THERMAL IMAGING RIFLE SCOPES

|                       | Secutor TS25-384                      | Secutor TS50-384                      | Secutor TS75-384                       |
|-----------------------|---------------------------------------|---------------------------------------|--|
| Detector              | 17µm Uncooled Microbolometer          | 17µm Uncooled Microbolometer          | 17µm Uncooled Microbolometer           |
| Resolution            | 384x288                               | 384x288                               | 384x288                                |
| Video Refresh Rate    | 50 Hz                                 | 50 Hz                                 | 50 Hz                                  |
| Lens System           | 25 mm; F/1.0                          | 50 mm; F/1.0                          | 75 mm; F/1.0                           |
| Optical Magnification | 1.2x                                  | 2.4x                                  | 3.6x                                   |
| Field of View (H × V) | 15.0° × 11.2°                         | 7.5° × 5.6°                           | 5.0° × 3.7°                            |
| Digital Zoom          | 1x, 2x, 4x, PIP(2x)                   | 1x, 2x, 4x, PIP(2x)                   | 1x, 2x, 4x, PIP(2x)                    |
| Weight                | 0.65 kg (1.43 lb)                     | 0.7 kg (1.54 lb)                      | 0.76 kg (1.67 lb)                      |
| Dimensions            | 166 × 70 × 82 mm (6.5 × 2.8 × 3.2 in) | 166 × 70 × 82 mm (6.5 × 2.8 × 3.2 in) | 192 × 89 × 100 mm (7.6 × 3.5 × 3.9 in) |

\* Special Order

## THERMAL IMAGING RIFLE SCOPES

|                              | Python TS25-336*                              | Python TS50-336*                              | Python TS75-336*                              | Python TS25-640                               | Python TS50-640                               | Python TS75-640                               |
|------------------------------|---|---|---|---|---|---|
| <b>Detector</b>              | FLIR Tau 2<br>17µm Uncooled<br>Microbolometer | FLIR Tau 2<br>17µm Uncooled<br>Microbolometer | FLIR Tau 2<br>17µm Uncooled<br>Microbolometer | FLIR Tau 2<br>17µm Uncooled<br>Microbolometer | FLIR Tau 2<br>17µm Uncooled<br>Microbolometer | FLIR Tau 2<br>17µm Uncooled<br>Microbolometer |
| <b>Resolution</b>            | 336x256                                       | 336x256                                       | 336x256                                       | 640x512                                       | 640x512                                       | 640x512                                       |
| <b>Video Refresh Rate</b>    | 60 Hz   | 60 Hz   | 60 Hz   | 30 Hz   | 30 Hz   | 30 Hz   |
| <b>Lens System</b>           | 25 mm; F/1.0                                  | 50 mm; F/1.0                                  | 75 mm; F/1.0                                  | 25 mm; F/1.0                                  | 50 mm; F/1.0                                  | 75 mm; F/1.0                                  |
| <b>Optical Magnification</b> | 2x  | 3x  | 5x  | 1x  | 2x  | 3x  |
| <b>Field of View (H × V)</b> | 13° × 10°                                     | 7.8° × 5.9°                                   | 4.3° × 3.3°                                   | 25° × 8°                                      | 14.8° × 11.8°                                 | 8.3° × 6.6°                                   |
| <b>Digital Zoom</b>          | 1x, 2x, 4x                                    | 1x, 2x, 4x                                    | 1x, 2x, 4x                                    | 1x, 2x, 4x, 8x                                | 1x, 2x, 4x, 8x                                | 1x, 2x, 4x, 8x                                |
| <b>Weight</b>                | 0.79 kg (1.7 lb)                              | 0.84 kg (1.8 lb)                              | 0.9 kg (1.9 lb)                               | 0.79 kg (1.74 lb)                             | 0.84 kg (1.85 lb)                             | 0.9 kg (1.98 lb)                              |
| <b>Dimensions</b>            | 227 × 71 × 78 mm<br>(8.9 × 2.7 × 3.0 in)      | 228 × 71 × 81 mm<br>(8.9 × 2.7 × 3.1 in)      | 252 × 89 × 104 mm<br>(9.9 × 3.5 × 4.0 in)     | 227 × 71 × 78 mm<br>(8.9 × 2.7 × 3.0 in)      | 228 × 71 × 81 mm<br>(8.9 × 2.7 × 3.1 in)      | 252 × 89 × 104 mm<br>(9.9 × 3.5 × 4.0 in)     |

## THERMAL IMAGING CLIP-ONS

|                              | Rattler TC35-384                      | Anaconda-Micro TC50-384*              | Victrix TC50-384                      | Anaconda TC50-640                          |
|------------------------------|---------------------------------------|---------------------------------------|---------------------------------------|--|
| <b>Detector</b>              | 17µm Uncooled Microbolometer          | 17µm Uncooled Microbolometer          | 17µm Uncooled Microbolometer          | FLIR Tau 2<br>17µm Uncooled Microbolometer |
| <b>Resolution</b>            | 384x288                               | 384x288                               | 384x288                               | 640x512                                    |
| <b>Video Refresh Rate</b>    | 50 Hz                                 | 50 Hz                                 | 50 Hz                                 | 30 Hz                                      |
| <b>Lens System</b>           | 35 mm; F/1.0                          | 50 mm; F/1.1                          | 50 mm; F/1.0                          | 50 mm; F/1.0                               |
| <b>Optical Magnification</b> | 1x                                    | 1x                                    | 1x                                    | 1x   |
| <b>Field of View (H × V)</b> | 10.0° × 8.0°                          | 7.4° × 5.6°                           | 7.5° × 5.6°                           | 14.8° × 11.8°                              |
| <b>Digital Zoom</b>          | 1x, 2x, 4x, 8x, PIP                   | 1x, 2x, 4x, PIP(2x)                   | 1x, 2x, 4x, PIP(2x)                   | 1x, 2x, 4x, 8x                             |
| <b>Weight</b>                | 0.42 kg (0.93 lb)                     | 0.43 kg (0.94 lb)                     | 0.68 kg (1.5 lb)                      | 0.7 kg (1.54 lb)                           |
| <b>Dimensions</b>            | 153 × 62 × 59 mm (6.0 × 2.4 × 2.3 in) | 162 × 65 × 67 mm (6.3 × 2.8 × 2.6 in) | 190 × 84 × 64 mm (7.5 × 3.3 × 2.5 in) | 208 × 71 × 81 mm (8.2 × 2.7 × 3.1 in)      |

\* Special Order



A close-up, low-angle shot of a soldier's head and shoulders. The soldier is wearing a tactical helmet with various attachments, including a night vision device. The soldier is holding a rifle, and the night vision device is mounted on the rifle. The background is dark and out of focus. The overall tone is serious and professional.

## NIGHT VISION

- MONOCULARS
- BINOCULARS
- RIFLE SCOPES
- CLIP-ON SYSTEMS





## WOLF-14 NIGHT VISION MONOCULAR

The Wolf-14 is a high-tech, durable and versatile Night Vision monocular that delivers great performance at a reasonable price. Packed with high-tech features, the Wolf-14 is equally suited for law enforcement and security professionals as it is for hunting and recreation. The Wolf-14 can be hand-held or mounted on a helmet or headgear. A specialized mount enables use with a rifle and the ability to mount in front of a camcorder or camera makes it ideal for night photography. With a variety of compatible lenses, long-range nighttime viewing is available in seconds. The Wolf-14 features bright light shut-off circuitry and a built-in spot/flood IR illuminator. The Wolf-14 can be equipped with high-performance Gen 2 image intensifier tubes in green or white phosphor.

- Available in both Green (P43) and White (P45) Gen2 configurations
- Compact, rugged design
- Head or helmet mountable for hands-free usage
- Weapon mountable
- Bright light cut-off
- Ergonomic, simple, easy to operate controls
- Utilizes single CR123A lithium battery or AA Alkaline: adapter included
- Built-in Infrared illuminator and flood lens
- Limited 3-year warranty



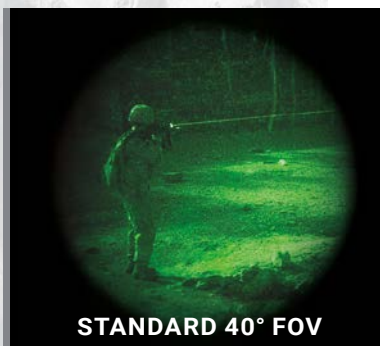


## NVM-40, NVM-50 NIGHT VISION MONOCULAR

The NVM is the standard by which all compact multiuse monoculars should be judged, now and in the future. The NVM employs optics that are equal or superior to current Military-issue night vision devices, built into a rugged, compact, and ergonomic composite housing. We built this device to exceed user expectations and MIL-SPEC-810 specifications; as a result, the NVM offers unmatched performance even in rain, salt water, temperature extremes, and high-humidity environments. With a 51° field of view, NVM-50 model provide a large visual field without needing to move the monocular.

The NVM is available with a vast array of accessories, including 3x and 5x magnification lenses for mid to long-range viewing; head or helmet mounts to enable handsfree operation; a variety of different weapon mounts for tactical use or hunting; and, a detachable IR illuminator for long-range use.

- Available in 40 deg FOV or larger 51 deg FOV configurations
- Available in both Green (P43) and White (P45) Gen2 and Gen3 configurations
- Compact, rugged design
- Waterproof
- Head or helmet-mountable for hands-free usage
- Weapon-mountable
- Ergonomic, simple, easy-to-operate controls
- Built-in Infrared illuminator and flood lens
- Utilizes a single CR123A Lithium or AA battery
- Limited 3-year warranty



**STANDARD 40° FOV**



**EXPANDED 51° FOV**

\* Available only by special order



## PVS-14, PVS14-51 NIGHT VISION MONOCULAR

The AGM PVS-14 Night Vision Monocular is a rugged, lightweight, multi-purpose night vision device that has repeatedly proven itself in combat. The PVS-14 design was originally commissioned by the United States Military to enable nighttime operations. This monocular is used globally in some of the most challenging environments. The PVS-14 can be used as a handheld device, or mounted on the included head harness. With the proper accessories, it can also be mounted to combat helmets or weapons, providing night vision capabilities to daytime optical sights. The PVS-14 monocular conforms to 810G Military standards and demonstrates the highest quality form and function.

The PVS-14 monocular is a full-featured unit. Weighing less than 12.4 ounces/ 0.32 kilograms. The unit includes manual gain control, an automatic bright light shut-off feature, and a built-in Infrared (IR) illuminator. The bright light shut-off feature ensures that the high-quality photocathode tube is protected. AGM's PVS-14 includes an array of optional accessories to support virtually any operation.

The PVS14-51 model has an extended field of view. Its 51° FOV covers a large visual range, without requiring the operator to shift the position of the device.

- Available in 40 deg FOV or larger 51 deg FOV configurations
- Available in both Green (P43) and White (P45) Gen2 and Gen3 configurations
- Compact, rugged design
- Waterproof
- Head or helmet-mountable for hands-free usage
- Manual gain control
- Ergonomic, simple, easy-to-operate controls
- Built-in Infrared illuminator and flood lens
- Limited 3-year warranty







## PVS14-OMEGA NIGHT VISION MONOCULAR

The AGM PVS14-OMEGA is the lightest multi-purpose night vision monocular currently available. The ultra-light PVS14-OMEGA is designed with new MIL-SPEC light weight optics and an improved battery compartment equipped with digital push button switches that reduces the total weight of the system from 350 grams to only 240 grams.

The modified AGM PVS14-OMEGA retains all the characteristics of a normal AN/PVS-14, but in smaller housing dimensions. The unit features a Full Diopter Adjustment Range, Infrared LED, Gain Control, IR/ Low Battery Indicator, flip up turn off and flip down turn on system and the capability to be hand-held, mounted on the helmet, headgear or weapon.

The AGM PVS14-OMEGA operates with just 4 controls, similar to the AN/PVS-14: one button for power on/off, one button for turning on and off the IR LED, and two switches (+/-) for raising and lowering the Gain Control.

The PVS14-OMEGA has an extended field of view. Its 51° FOV covers a large visual range, without requiring the operator to shift the position of the device.

Manufactured with US made optics and components and equipped with high-quality Gen 2+ or Gen 3 tubes, the AGM PVS14-OMEGA provides outstanding performance that complies with US military standards.

- Compact and light-weight design
- Wide 51° field of view
- Manual gain control
- Built-in infrared illuminator
- Powered by single AA battery
- IR/Low Battery indicator
- Head or helmet-mountable
- Made in USA
- Limited 3-year warranty



\* Available only by special order



## WOLF-7 NIGHT VISION GOGGLES

The AGM Wolf-7 is a bi-ocular Night Vision goggle system built around high-grade Gen 2+ or Gen 3 image intensifier tubes. They are an exceptional choice for hands-free use. Built with high-grade optics and simple, reliable electronics, the Wolf-7 provides bright and clear Night Vision images, even in the most trying conditions. This unit includes a built-in IR light source for reading maps or basic, short-range illumination in complete darkness.

The AGM Wolf-7 is available with a variety of accessories such as 3X and 5X magnification lenses for mid-to-long-range viewing, head or helmet mounts for hands-free operation, and additional, high-powered IR illuminators for long-range use.

Water-resistant, rugged, light, and compact, the Wolf-7 is the perfect hands-free unit for a variety of tough operations.

- Available in both Green (P43) and White (P45) Gen2 configurations
- Lightweight compact rugged goggle system
- Multi-purpose: Hand-held, head-mounted or helmet mounted
- Comfortable flip-up headgear
- Multi-coated all-glass optics
- Wide angle infrared illuminator
- Auto brightness control
- Bright light cut-off
- Utilizes single CR123A lithium battery or AA Alkaline
- Waterproof
- Limited 3-year warranty





## PVS-7 NIGHT VISION GOGGLES

The PVS-7 is widely recognized for its unsurpassed dependability and ergonomic design. This U.S. Military-grade night vision goggle system has repeatedly proven its worth in combat, and is the highest-quality AN/PVS-7 B/D system on the market. The PVS-7 can be outfitted with high-performance Gen 2+ and Gen 3 image intensifier tubes (available in Green phosphor or P45 white phosphor).

The PVS-7 is equipped with Automatic Brightness Control (ABC) to adjust image brightness in changing light conditions to maintain image definition and clarity. The built-in infrared illuminator provides a light source beyond the visible spectrum to enable the user to operate in complete darkness without being detected.

Additionally, the PVS-7 has a bright light cutoff feature to protect the image tube from sources of intense light, and a flip-up shut-off feature that can be used with the optional helmet mount system. The PVS-7 has two LED indicators in the eyepiece for the IR illuminator on and low battery indicator.

Lightweight, tough, and versatile, the PVS-7 can be handheld, or mounted to the user's head/helmet. It is compatible with afocal magnifier lenses for superior long-range viewing.

- Available in both Green (P43) and White (P45) Gen2 and Gen3 configurations
- Compact, rugged design
- Waterproof
- Head or helmet-mountable for hands-free operation
- Ergonomic, simple, easy-to-operate controls
- Built-in Infrared illuminator
- Limited 3-year warranty





## NVG-40, NVG-50 NIGHT VISION GOGGLES / BINOCULARS

The AGM NVG-40/NVG-50 is a dual-channel night vision system. The NVG uses advanced multi-coated optics and is built to last with a compact composite housing. The device can be outfitted with either a Gen 2+ or Gen 3 high-performance image intensifier tube (IIT). The bright light cut-off feature ensures that the high-quality photocathode tube is protected. The NVG is also equipped with Manual Gain Control, which adjusts the image brightness, providing the highest possible image quality even in changing light conditions. Operating from a single AA alkaline battery or CR123A battery, the NVG can run up to 20 hours. Also equipped with an integral infrared illuminator for reading in the dark. With a 51° field of view, NVG-50 model provide a large visual field without needing to move the binoculars.

- Available in both Green (P43) and White (P45) Gen2 and Gen3 configurations
- Redundant dual-tube design
- True stereoscopic vision
- Wide 51° field of view (NVG-50)
- Lightweight & compact
- Head or helmet mountable for hands-free operation
- Bright light cut-off
- Manual gain control
- Ergonomic, simple, easy to operate controls
- Built-in Infrared illuminator and flood lens
- Utilizes single CR123A lithium or AA battery
- Limited 3-year warranty







## APACHE A-9 AVIATOR NIGHT VISION GOGGLE SYSTEM

The Apache A-9 Aviator Night Vision Goggle System represents a variant of the AN/AVS-6(v)/9 series ANVIS Goggle, which is the US Army/Navy standard fielded issue. AGM brings a new level of performance to the system by offering the Apache A-9 with both standard P-43 green and high contrast P-45 white phosphor image intensifier tubes.

The Apache A-9 System is equipped with Class A or Class B filter coatings on the objective lenses and offer a 40° minimum field of view. The large format 27 mm eye relief eyepieces can be adjusted from +2 to -6 diopters for most corrective lenses. In addition, the Apache A-9 accommodates interpupillary spans between 51 mm to 72 mm and offers over 10° tilt adjustments to compensate for a wide range of in-service helmet applications.

- Redundant dual-tube design
- True stereoscopic vision for optimized depth perception and large 25mm eyepieces
- Improved 40° field of view
- Provides improved situational awareness and enhanced ergonomics
- Compact, rugged design
- Ergonomic, simple, easy to operate controls
- Wide range of in-service helmet applications
- Low profile battery pack assembly
- Aircraft power port
- AA battery operation
- Limited 3-year warranty



\* Available only by special order



## FOXBAT NIGHT VISION BI-OCULAR

The AGM FoxBat night vision bi-ocular is the perfect tool for mid-range and long-range observation. The FoxBat combines a single high quality image intensifier tube with a image beam splitter and double eyepiece, making it applicable for long viewing sessions. The FoxBat is packed with features, such as digital controls and a proximity sensor for automatic shut off in varying light conditions. This night vision bi-ocular is the ideal choice for security and recreational use.

- Available in both Green (P43) and White (P45) Gen2 configurations
- 5x or 8x magnification
- Super-fast, multi-coated, all-glass optics
- Dual eye viewing system for long viewing sessions
- Detachable long-range infrared illuminator
- Rugged and versatile design
- Water and fog resistance
- Tripod mountable
- Hand strap and neck strap for comfort of use
- Limited 3-year warranty





## FOXBAT-LE NIGHT VISION BI-OCULAR

The AGM FoxBat-LE night vision bi-ocular is the perfect tool for mid-range and long-range observation. The FoxBat-LE is compatible with a range of professional high-quality objective lenses to match all users' requirements currently available in three configurations - 6x, 7x, and 10x magnification.

The FoxBat-LE is a professional night vision device favored by law enforcement and military units due to its unmatched performance, even in extreme temperatures and challenging weather conditions such as rain or excessive humidity. The device can be outfitted with either a Gen 2+ or Gen 3 high-performance image intensifier tube (IIT), which can be repaired or upgraded easily. The bright light shut-off feature ensures that the high-quality photocathode tube is protected. The FoxBat-LE is also equipped with Automatic Brightness Control (ABC), which adjusts the image brightness automatically, providing the highest possible image quality even in changing light conditions. FoxBat-LE is supplied with two AA batteries and its operating time is up to 40 hours of continuous use.

- Available in both Green (P43) and White (P45) Gen2 and Gen3 configurations
- 6x, 7x, or 10x magnification\*
- Lightweight rugged design
- Waterproof
- Auto brightness control
- Ergonomic and easy to operate controls
- Limited 3-year warranty



FoxBat-LE7



FoxBat-LE6



FoxBat-LE10

\* FoxBat-LE10 is available only by special order



## WOLVERINE-4 NIGHT VISION RIFLE SCOPE

The Wolverine-4 is a rugged and advanced night vision rifle scope that offers excellent performance at a competitive price. Boasting a high-quality Gen 2+ image intensifier tube, adjustable illuminated reticle, easy-to-use internal windage and elevation adjustments, and simple controls, the Wolverine-4 allows you to see beyond the expected in nighttime conditions. This rifle scope is manufactured using a specially-coated aircraft alloy. It is equipped with a double-lever quick-release mount that allows for highly-accurate rail positioning to maximize user comfort. The manual precision top wheel focus provides improved accuracy and ergonomics. Water-resistant, lightweight, and robust, the Wolverine-4 is the ideal night vision rifle scope for dedicated hunters and tactical marksmen.

- High-quality Green (P43) Gen 2+ image intensifier tube
- 4x magnification
- Shock protected, all-glass IR transmission multi-coated optics
- Made from aircraft aluminum alloy
- Illuminated reticle with brightness adjustment
- Utilizes single CR123A lithium or AA battery
- Quick-release mount
- Mounts to standard weaver rails
- Limited 3-year warranty







## WOLVERINE PRO NIGHT VISION RIFLE SCOPE

The Wolverine Pro represents our newest series of military grade level Night Vision rifle scopes. The Wolverine Pro utilizes a high strength aluminum design to service the rugged day-to-day requirements and ever-changing environments. Except for the optical elements, all external surfaces utilize a non-reflective matte black finish. The external objective lens and eyepiece lens elements are protected with an ultra-durable (scratch-resistant) coating. Controls and adjustments are easy to operate and include reticle brightness, eyepiece focus, range (distance) focus, plus windage and elevation adjustments.

- Available in both Green (P43) and White (P45) Gen2 and Gen3 configurations
- 4x or 6x magnification
- Easy to operate
- Illuminated reticle with brightness adjustment
- Powered by 2 AA batteries
- Waterproof
- 40 hour continuous operation
- Quick-release mount
- Limited 3-year warranty





## COMANCHE-22 NIGHT VISION CLIP-ON SYSTEM

The AGM Comanche-22 Night Vision Clip-On (NVCO) system uses the latest advances in night vision clip-on technology. Designed for mid-range nighttime shooting, the Comanche-22 delivers exceptional clarity, reliability, and versatility providing the most significant functionality and features at the lowest possible price.

The Comanche-22 is mounted to a standard Weaver or Picatinny rail in front of an existing day scope; transforming it into a Night Vision Device with no re-zeroing required. This NVCO can be used with day scopes of up to 7x magnification for optimal performance and is equipped with a quick release mount and wireless remote control. It provides unmatched target acquisition and enhanced aiming capabilities, making it extremely practical and effective during the most challenging missions.

- Available in both Green (P43) and White (P45) Gen2 and Gen3 configurations
- Simple, quick conversion of daytime scopes to NVDs
- Manual gain control
- Mounts in front of any daytime scope, no re-zeroing required
- Equipped with a wireless remote control
- Powered by a single Alkaline 1.5V AA or 3V CR123A Lithium battery
- Bright-light cut-off system
- Quick-release mount
- Limited 3-year warranty





## COMANCHE-40 NIGHT VISION CLIP-ON SYSTEM

The Comanche-40 Night Vision Clip-On (NVCO) system uses the latest advances in night vision clip-on technology. Designed for mid-range nighttime shooting, the Comanche-40 delivers exceptional clarity, reliability, and versatility providing the most significant functionality and features at the lowest possible price.

The Comanche-40 is mounted to a standard Weaver or Picatinny rail in front of an existing day scope; transforming it into a Night Vision Device with no re-zeroing required. This NVCO can be used with day scopes of up to 12x magnification for optimal performance and is equipped with a quick release mount and remote control. It provides unmatched target acquisition and enhanced aiming capabilities, making it extremely practical and effective during the most challenging missions.

- Available in both Green (P43) and White (P45) Gen2 and Gen3 configurations
- Simple, quick conversion of daytime scopes to NVDs
- Manual gain control
- Mounts in front of any daytime scope, no re-zeroing required
- Equipped with a remote control
- Powered by a single Alkaline 1.5VAA or 3V CR123A Lithium battery
- Bright-light cut-off system
- Quick-release mount
- Limited 3-year warranty







# SPECIFICATIONS NIGHT VISION

## NIGHT VISION MONOCULARS

|               | Wolf-14                                  | NVM-40*                                  | NVM-50*                                  | PVS-14                                   | PVS14-51                                 | PVS14-OMEGA*                             |
|---------------|--|--|--|--|--|--|
| NV Generation | Gen 2+                                   | Gen 2+; Gen 3                            | Gen 2+; Gen 3                            | Gen 2+; Gen 3                            | Gen 2+; Gen 3                            | Gen 2+; Gen 3                            |
| Lens System   | 27 mm; F/1.2                             | 27 mm; F/1.3                             | 19 mm; F/1.26                            | 26 mm; F/1.2                             | 19 mm; F/1.26                            | 19 mm; F/1.26                            |
| Magnification | 1x                                       | 1x                                       | 1x                                       | 1x                                       | 1x                                       | 1x                                       |
| Field of View | 40°                                      | 40°                                      | 51°                                      | 40°                                      | 51°                                      | 51°                                      |
| Weight        | 0.46 kg (1.0 lb)                         | 0.34 kg (0.75 lb)                        | 0.34 kg (0.75 lb)                        | 0.32 kg (0.71 lb)                        | 0.30 kg (0.66 lb)                        | 0.24 kg (0.53 lb)                        |
| Dimensions    | 157 x 60 x 75 mm<br>(6.1 x 2.3 x 2.9 in) | 122 x 49 x 73 mm<br>(4.8 x 1.8 x 2.9 in) | 100 x 49 x 73 mm<br>(4.3 x 1.8 x 2.9 in) | 114 x 63 x 69 mm<br>(4.5 x 2.5 x 2.7 in) | 102 x 63 x 69 mm<br>(4.0 x 2.5 x 2.7 in) | 102 x 63 x 69 mm<br>(4.0 x 2.5 x 2.7 in) |

## NIGHT VISION GOGGLES

|               | Wolf-7                                    | PVS-7                                     | NVG-40                                    | NVG-50                                    | Apache A9 *                               |
|---------------|---|---|---|---|---|
| NV Generation | Gen 2+                                    | Gen 2+; Gen 3                             | Gen 2+; Gen 3                             | Gen 2+; Gen 3                             | Gen 3                                     |
| Lens System   | 24 mm, F/1.2                              | 27 mm; F/ 1.2                             | 27 mm; F/1.3                              | 19 mm; F/1.26                             | 27 mm; F/1.2                              |
| Magnification | 1x  | 1x  | 1x  | 1x  | 1x  |
| Field of View | 40°                                       | 40°                                       | 40°                                       | 51°                                       | 40°                                       |
| Weight        | 0.45 kg (0.9 lb)                          | 0.68 kg (1.5 lb)                          | 0.64 kg (1.42 lb)                         | 0.61 kg (1.35 lb)                         | 0.5 kg (1.1 lbs)                          |
| Dimensions    | 188 x 122 x 70 mm<br>(7.4 x 4.8 x 2.8 in) | 162 x 152 x 76 mm<br>(6.4 x 6.0 x 3.0 in) | 115 x 118 x 74 mm<br>(4.5 x 4.6 x 2.9 in) | 112 x 118 x 74 mm<br>(4.4 x 4.6 x 2.9 in) | 116 x 130 x 98 mm<br>(4.6 x 5.1 x 3.9 in) |

\* Special Order

## NIGHT VISION BINOCULARS

|               | FoxBat-5                                   | FoxBat-8                                    | FoxBat-LE6                                 | FoxBat-LE7                                  | FoxBat-LE10*                                |
|---------------|--|---|--|---|---|
| NV Generation | Gen 2+                                     | Gen 2+; Gen 3                               | Gen 2+; Gen 3                              | Gen 2+; Gen 3                               | Gen 3                                       |
| Lens System   | 27 mm; F/1.2                               | 160 mm; F/2.0                               | 145 mm; F/1.8                              | 192 mm; F/2.13                              | 250 mm; F/2.0                               |
| Magnification | 5x   | 8x  | 5.6x                                       | 7.4x  | 9.6x  |
| Field of View | 9.5°                                       | 6.5°  | 7°   | 5.4°  | 4°  |
| Weight        | 1.35 kg (2.9 lb)                           | 1.55 kg (3.4 lb)                            | 1.02 kg (2.25 lb)                          | 1.34 kg (2.95 lb)                           | 1.9 kg (4.2 lb)                             |
| Dimensions    | 262 x 140 x 81 mm<br>(10.3 x 5.5 x 3.1 in) | 307 x 140 x 100 mm<br>(12.0 x 5.5 x 3.9 in) | 282 x 152 x 96 mm<br>(11.1 x 6.0 x 3.8 in) | 343 x 152 x 104 mm<br>(13.5 x 6.0 x 4.1 in) | 382 x 152 x 137 mm<br>(15.0 x 6.0 x 5.4 in) |

## NIGHT VISION RIFLE SCOPES

|               | Wolverine-4                               | Wolverine Pro-4                          | Wolverine Pro-6                            |
|---------------|---|--|--|
| NV Generation | Gen 2+                                    | Gen 2+; Gen 3                            | Gen 2+; Gen 3                              |
| Lens System   | 108 mm; F/1.54                            | 70 mm; F/1.4                             | 100 mm; F/1.5                              |
| Magnification | 4x  | 4x                                       | 6x   |
| Field of View | 9°  | 8.3°                                     | 5.7°                                       |
| Weight        | 1.2 kg (2.6 lb)                           | 1.07 kg (2.35 lb)                        | 1.07 kg (2.35 lb)                          |
| Dimensions    | 308 x 94 x 97 mm<br>(12.1 x 3.7 x 3.8 in) | 215 x 95 x 82 mm<br>(8.4 x 3.7 x 3.2 in) | 285 x 108 x 91 mm<br>(11.2 x 4.3 x 3.6 in) |

## NIGHT VISION CLIP-ONS

|               | Comanche-22                              | Comanche-40                               |
|---------------|--|---|
| NV Generation | Gen 2+; Gen 3                            | Gen 2+                                    |
| Lens System   | 80 mm; F/1.44                            | 80 mm; F/1.44                             |
| Magnification | 1x                                       | 1x  |
| Field of View | 12°                                      | 12°                                       |
| Weight        | 0.75 kg (1.65 lb)                        | 1.04 kg (2.3 lb)                          |
| Dimensions    | 168 x 85 x 80 mm<br>(6.6 x 3.3 x 3.1 in) | 189 x 104 x 90 mm<br>(7.4 x 4.1 x 3.5 in) |

\* Special Order



# AGM GEN 2+ AND GEN 3 I<sup>2</sup> TUBES

## IMAGE INTENSIFIER TUBES

AGM Gen 2+ and Gen 3 Image Intensifier tubes (IIT) are designed as compact 18mm format, inverting or non-inverting dual proximity focused devices with high sensitivity photocathodes.

AGM Gen 2+ IIT are designed as proximity focused MCP based image intensifiers with high efficiency extended S-20 or S-25 Multi-Alkaline photocathodes.

AGM Gen 3 IIT are designed with high sensitivity Gallium Arsenide (GaAs) photocathodes and gated or non-gated power supply. These technologies deliver a very high signal to noise ratio for extended detection ranges along with exceptional resolution in low-light conditions.

AGM Global Vision offers the image intensifier tubes with a P-43 (green) or P-45 (white) phosphor screen in three performance levels. The main differences among the levels are resolution and cosmetics.

**NL1** – Gen 2 green phosphor tube (P43) with resolution ranging from 51 to 64 lp/mm. NL1 is the highest resolution and the cleanest Gen 2 IIT offered by AGM. There are practically no visible spots in Zone 1.

**NL2** – Gen 2 green phosphor tube (P43) with resolution ranging from 45 to 57 lp/mm. NL2 is the second-best quality Gen 2 IIT offered by AGM, very limited number of spots in Zone 1.

**NL3** – Gen 2 green phosphor tube (P43) with resolution ranging from 45 to 51 lp/mm. NL3 offers good quality at competitive pricing.

**NW1** – Gen 2 white phosphor tube (P45) is using white phosphor instead of standard green phosphor providing black and white high contrast image which is more suitable for some users. Resolution ranges within 51-64 lp/mm. Systems designated NW1 are offered with high-quality Gen 2 image tubes displaying virtually no visible blemishes in Zone 1.

**NW2** – Systems designated NW2 employ Gen 2 white phosphor image tubes with resolution ranging from 45 to 57 lp/mm. NW2 is the second-best quality Gen 2 IIT offered by AGM, very limited number of spots in Zone 1.

**NW3** – Systems designated NW3 employ Gen 2 white phosphor image tubes with resolution ranging from 45 to 51 lp/mm. NW3 offers good quality at competitive pricing.

**3NL1** – Gen 3 green phosphor tube (P43) with resolution ranging from 64 to 72 lp/mm. 3NL1 is the highest resolution and the cleanest Gen 3 IIT offered by AGM. There are practically no visible spots in Zone 1.

**3NL2** – Gen 3 green phosphor tube (P43) with resolution ranging from 64 to 72 lp/mm. 3NL2 is the second-best quality Gen 3 IIT offered by AGM with very limited number of spots in Zone 1.

**3NL3** – Gen 3 green phosphor tube (P43) with resolution ranging from 57 to 64 lp/mm. 3NL3 offers good quality at competitive pricing.

**3AL1, 3AL2, and 3AL3** tubes have similar characteristics and an autogated power supply.

**3NW1** – Gen 3 white phosphor tube (P45) uses white phosphor instead of standard green phosphor providing black and white imaging which is more suitable for some users. Resolution range varies within 64-72 lp/mm. 3NW1 is offered with high quality white phosphor Gen 3 IIT and practically no visible spots in Zone 1.

**3NW2** – Gen 3 white phosphor tube (P45) with resolution ranging from 64 to 72 lp/mm. 3NW2 is the second-best quality white phosphor Gen 3 IIT offered by AGM with very limited number of spots in Zone 1.

**3NW3** – Gen 3 white phosphor tube (P45) with resolution ranging from 57 to 64 lp/mm. 3NW3 offers good quality at competitive pricing.

**3AW1, 3AW2, and 3AW3** tubes have similar characteristics and an autogated power supply.



|   | GEN 2+          | GEN 3                                     |
|---|-----------------|---|
| <b>Resolution, lp/mm</b>  | 45 - 64         | 64 - 72                                   |
| <b>Photocathode Sensitivity</b>   |                 |   |
| @2856° K, $\mu\text{A/lm}$  | 250 - 850       | 1500 - 2000                               |
| @880 nm mA/W  | 55 - 190        | 55 - 100                                  |
| <b>Signal-to-Noise Ratio</b>  | 18 - 25         | 22 - 31                                   |
| <b>FOM</b>  | 1100 - 1800     | 1600 / 1800 / 2000 / 2200                 |
| <b>Halo, mm</b>   | -               | > 0.85 / > 0.7                            |
| <b>EBI, <math>\text{X}10^{-11} \text{ lm/cm}^2 \text{ (max)}</math></b> | 2.5             | 2.5                                       |
| <b>Luminous Gain, fL/fc</b>   |                 |   |
| @ $2\text{X}10^{-6} \text{ fc (min-max)}$                               | 40,000 - 70,000 | 50,000 - 80,000                           |
| @ $2\text{X}10^{-4} \text{ fc (min-max)}$                               | 10,000 - 20,000 | 14,000 - 21,000                           |
| <b>Output Brightness, fL @1 and 20 fc</b>                               | 2.8 - 3.1       | 2.8 - 4.2                                 |
| <b>MTF (minimum)</b>  |                 |   |
| @2.5 lp/mm  | 92%             | Info only                                 |
| @7.5 lp/mm  | 80%             | Info only                                 |
| @15.0 lp/mm   | 61%             | 61%                                       |
| @25.0 lp/mm   | 38%             | 38%                                       |
| <b>Reliability, Hours (min)</b>   | 10,000          | 10,000                                    |
| <b>Photocathode Diameter, mm (min)</b>                                  | 17.5            | 17.5                                      |
| <b>Power Supply</b>   | Built-in        | Built-in<br>Auto-gated/<br>Non-auto-gated |

A man in full camouflage gear, including a beanie and jacket, is looking through binoculars in a forest. He is holding a rifle with a scope. The background is a dense forest of green trees.

DAY OPTICS

- BINOCULARS
- RIFLE SCOPES





## 7X50, 8X36, 10X42 BINOCULARS

AGM binoculars offer 7x, 8x and 10x magnification, waterproof construction, and a built-in range finding reticle. These binoculars are ideal for military, law enforcement or outdoor adventurer's needs.

AGM binoculars provide powerful magnification and crystal-clear optics that deliver a full range of color and clarity. The multi-coated optics of the binoculars are designed to enhance the resolution and contrast of your image in extremely bright conditions. The built-in universal range finder allows for accurate target measurements and range estimates.

- Powerful magnification
- Designed for professional use
- Built-in universal rangefinder
- Multi-coated optics
- Full rubber body armoring
- Individual eye focus
- Limited 3-year warranty

|                         | 7X50                                      | 8X36                                      | 10X42                                     |
|-------------------------|---|---|---|
| Magnification           | 7x  | 8x  | 10x                                       |
| Prisms system           | Porro / Bak-4                             | Porro / Bak-4                             | Roof / Bak-9                              |
| Objective lens diameter | 50 mm                                     | 35 mm                                     | 42 mm                                     |
| Field of View           | 7.5°                                      | 7°  | 5.8°                                      |
| Exit pupil              | 7.1 mm                                    | 4.4 mm                                    | 4.2 mm                                    |
| Relative Brightness     | 50.4                                      | 19.4                                      | 17.6                                      |
| Resolution              | ≤ 4.5"                                    | ≤ 6.2"                                    | ≤ 8.6"                                    |
| Twilight Factor         | 18.7                                      | 16.8                                      | 20.5                                      |
| Waterproof              | 0.5 m for 30 min                          | 1 m for 30 min                            | 1 m for 30 min                            |
| Weight                  | 1.4 kg (3.0 lbs)                          | 0.6 kg (1.3 lbs)                          | 0.76 kg (1.7 lbs)                         |
| Dimensions              | 200 × 150 × 85 mm<br>(7.9 × 5.9 × 3.3 in) | 165 × 127 × 65 mm<br>(7.9 × 5.9 × 3.3 in) | 155 × 130 × 55 mm<br>(6.4 × 5.1 × 2.2 in) |



\* Available only by special order



## 20RD RED DOT SIGHT

The 20RD is the perfect sight for anyone in need of a lightweight and compact optic for a low price. These Red Dot Sights 20RD have a 2 MOA dot to get you on target and keep you there. The durable housing is both shock and fog resistant with maximum reliability. For a sight that won't let you down - when you need it the most - at a price that won't break the bank, choose the 20RD Miniature Red Dot Sight.

- 2 MOA Red Dot
- Polished/Coated Lenses
- Picatinny Mount
- Shock Resistant
- Fog Resistant
- Limited 3-year warranty



|                       |   |
|-----------------------|---|
| Reticle               | Red dot Illuminated                     |
| Magnification         | 1x                                      |
| Objective             | 23mm x 16mm                             |
| Field of View         | 15.7m at 100m                           |
| Eye Relief            | Unlimited                               |
| Battery Type          | CR 2032                                 |
| Battery Life          | 20,000 Hours                            |
| Attachment/Mount Type | Picatinny                               |
| Operating Temperature | -10°C to 50°C ( 14° to 122°F)           |
| Weather Resistance    | Fog Resistant                           |
| Finish                | Matte                                   |
| Dimensions            | 45 x 35 x 30 mm<br>(1.7 x 1.4 x 1.2 in) |
| Weight                | 55 g (1.94 oz)                          |



\* Available only by special order



## 330PS, 430PS PRISM SCOPES

The AGM 330PS and 430PS are prism scopes with ultra-clear optical quality for medium range shooting. Their long eye relief and large field of view help shooters capture the target.

The 5 illumination levels allow the user to adjust to all outdoor light conditions. The reticle is etched directly on the prism and the windage and elevation turrets are precisely machined to ensure accuracy.

- 3x or 4x magnification
- Large field of view
- 5 illumination levels
- Fully multi-coated optics
- Long eye relief
- More than 120 MOA adjustment range
- Waterproof
- Fog resistant
- Limited 3-year warranty



|                         | 330PS                                    | 430PS                                    |
|-------------------------|--|--|
| Magnification           | 3x                                       | 4x                                       |
| Objective lens diameter | 27.5 mm                                  | 30 mm                                    |
| Field of View           | 6.2°                                     | 4.75°                                    |
| Exit Pupil Diameter     | 7.7 mm                                   | 7.7 mm                                   |
| Eye Relief              | 80 mm                                    | 80.4 mm                                  |
| Click Adjustment Value  | 0.5 MOA                                  | 0.5 MOA                                  |
| Waterproof              | 1.0 m / 30 Min                           | 1.0 m / 30 Min                           |
| Weight                  | 489 g (1.07 lbs)                         | 520 g (1.14 lbs)                         |
| Size                    | 116 x 58 x 76 mm<br>(4.5 x 2.2 x 2.9 in) | 142 x 63 x 76 mm<br>(5.5 x 2.4 x 2.9 in) |



\* Available only by special order





# 1-8X24RS, 2-16X44RS RIFLE SCOPES

The AGM series of professional rifle scopes features illuminated reticles and an innovative optical design for extra wide zoom range providing unparalleled performance. Multicoated lenses and 30-mm tubes provide amazing brightness, while the glass-etched Mil-Dot reticle will keep you dead-on target. The rifle scopes are equipped with positive click finger-adjustable turrets, a fast focus eyepiece and 36-mm ocular lens.

- Innovative optical design for extra-wide zoom range
- Fully multi-surface to surface-coated lenses for sharpest and brightest image
- High precision CNC processed parts
- Glass etched Mil-dot reticle
- Fast focus eyepiece
- 30mm one-piece tube
- Hard anodized black matte finishing
- Extra-low dispersion lens (ED) applied
- Limited 3-year warranty



|                         | 1-8X24RS         | 2-16X44RS        |
|-------------------------|------------------|------------------|
| Magnification           | 1x - 8x          | 2x - 16x         |
| Objective lens diameter | 24 mm            | 44 mm            |
| Field of View           | 21° - 2.63°      | 10.5° - 1.31°    |
| Exit Pupil Diameter     | 8 - 3 mm         | 8.2 - 2.75 mm    |
| Eye Relief              | 91 - 88 mm       | 95 - 89 mm       |
| Click Adjustment Value  | 0.5 MOA          | 0.5 MOA          |
| Side Focus              | No               | Yes              |
| Weight                  | 550 g (1.2 lbs)  | 650 g (1.4 lbs)  |
| Length                  | 270 mm (10.6 in) | 325 mm (12.8 in) |



\* Available only by special order



A close-up, low-angle shot of a soldier in full tactical gear, including a helmet, goggles, and a vest. The soldier is holding an assault rifle with a laser and illuminator attachment mounted on the front. The soldier's face is partially visible through the goggles. The background is a blurred outdoor setting with green grass and trees. A red banner is at the top right, and a red banner is at the bottom right.

## LASER AND ILLUMINATION TOOLS

- MULTISPECTRAL LASERS
- IR ILLUMINATORS



# RMSAL, TMAIM RIFLE-MOUNTED SQUAD AIMING LASER

The mil-spec RMSAL and TMAIM squad aiming lasers are the CLASS IIIb lasers consisting of a green or red visible aiming laser, a near-infrared (near-IR) aiming laser, and an adjustable near-IR illuminator.

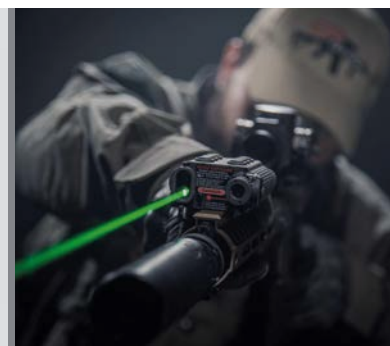
The function of the RMSAL and TMAIM is to provide an operator with highly collimated aiming lasers for precision aiming and targeting visible in low light conditions and in conjunction with night vision devices for night time applications. The focusable near-IR illuminator floods the area of interest with near-infrared light only visible when used with night vision devices.

The output power of the RMSAL and TMAIM can be adjusted electronically across 256 intervals. In addition, the aiming lasers can be operated via user selectable switch in either a constant wave or 4Hz pulsed mode.

- Rapid active target acquisition
- True night vision compatible mode
- Adjustable output power
- Green or red visible laser options
- User selectable constant wave or pulsed modes of aiming lasers
- Two tactical remote switches (including SAFETY remote switch)
- Co-aligned aiming lasers
- Unique ballistic differential adjustment ports
- Limited 3-year warranty



|                    | IR LASER                              | VISIBLE LASER        | IR ILLUMINATOR    |
|--------------------|---------------------------------------|----------------------|-------------------|
| RMSAL              | 50 $\mu$ W (Low)                      |                      | 500 $\mu$ W (Low) |
| Output Power       | 25 mW (High)                          | <5.0 mW              | 25 mW (High)      |
| TMAIM              | 100 $\mu$ W (Low)                     |                      | 500 $\mu$ W (Low) |
| Output Power       | 25 mW (High)                          | <4.0 mW              | 25 mW (High)      |
| Operating Distance | > 200 m (Low)                         | > 25 m               | > 100 m (Low)     |
|                    | >2,000 m (High)                       | (in direct sunlight) | >2,000 m (High)   |
| Divergence         | 0.5 mRad                              | 0.5 mRad             | 1-108 mRad        |
| Waterproof         | Up to 20m for 1 hour                  |                      |                   |
| Weight             | 0.2 kg ( 0.44 lb)                     |                      |                   |
| Dimensions         | 106 x 81 x 48 mm (4.2 x 3.2 x 1.9 in) |                      |                   |



\* Available only by special order



## SIoux LONG-RANGE IR ILLUMINATOR

The AGM Sioux extra long-range infrared illuminators provides advanced image-intensified viewing capabilities to night vision devices, and is ideally suited for operations in little to no ambient light.

The illuminator features adjustments for field of view divergence and output power, extending the capabilities of night vision device. One of the market's most powerful infrared illuminators, the AGM Sioux comes equipped with the 18650 rechargeable battery and charger.

The Sioux line includes the Sioux 850 model with 850nm peak wavelength and Sioux 940 model with 940nm peak wavelength. The 850nm wavelength is standard for most night vision applications. The 850nm light source does produce a faint red glow at direct exposure, but otherwise it is not visible to the naked eye. The main advantage of the 940nm wavelength is that it is completely invisible.

- Powerful, long-range infrared illuminator
- Power adjustment
- Wide-range beam angle adjustment
- Invisible to the human eye
- Eye safe
- Can be mounted on a Weaver rail or used as a handheld device
- Comes standard equipped with a rechargeable battery and charger unit
- Limited 3-year warranty

|                    | SIoux850                                 | SIoux940                                 |
|--------------------|--|--|
| Output Power       | 1,000 mW                                 | 800 mW                                   |
| Peak Wavelength    | 850 nm                                   | 940 nm                                   |
| Illumination Range | Up to 1,000 m                            | Up to 600 m                              |
| Divergence         | 4° to 35°                                | 4° to 35°                                |
| Weight             | 225 g (0.49 lb)                          | 225 g (0.49 lb)                          |
| Dimensions         | 153 × 48 × 48 mm<br>(6.0 × 1.8 × 1.8 in) | 153 × 48 × 48 mm<br>(6.0 × 1.8 × 1.8 in) |











## AGM GLOBAL VISION

173 West Main Street, PO Box 962

Springerville, AZ 85938, USA

Tel: +1 (928) 333-4300

[info@agmglobalvision.com](mailto:info@agmglobalvision.com)

[www.agmglobalvision.com](http://www.agmglobalvision.com)

## EUROPEAN OFFICE

AGM Global Vision

Andrey Lyapchev #7

Sofia, P.C. 1756, Bulgaria

Tel: +44 (292) 255-0509

[info@agmglobalvision.eu](mailto:info@agmglobalvision.eu)

[www.agmglobalvision.eu](http://www.agmglobalvision.eu)